

# HSF RoHS

## SPECIFICATIONS

Signal Rated Current:2.5AMP  
 Power Rated Current:30AMP  
 Signal Rated Voltage:50V AC  
 Power Rated Voltage:250V AC  
 Signal Contact Resistance:20mΩ Max  
 Power Contact Resistance:2mΩ Max  
 Signal Contact Withstand Voltage:1000V AC For 1 Minute  
 Power Contact Withstand Voltage:2500V AC For 1 Minute  
 Insulation Resistance:1000MΩ Min  
 Operation Temperature:-40°C to +105°C

Power Contact Material:Copper Alloy  
 Signal Contact Material:Copper Alloy  
 Contact Plating:Au or Sn Over Ni  
 PEG Material:Copper Alloy  
 PEG Plating:Tin Over Ni

Insulator Material:PA6T(UL94V-0)  
 Max.Processing Temp: 260°C±5°C For 5~10 Second

## Ordering Information

4500 - 28 M XX C S X 0 X

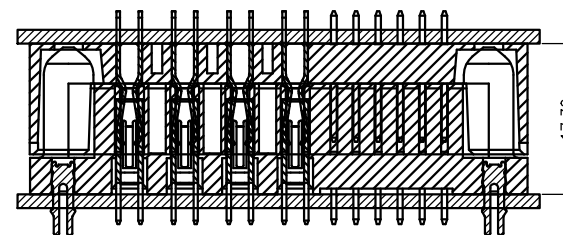
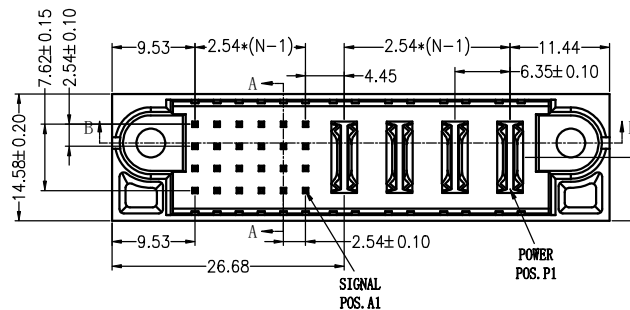
No.of Pins  
24S+4P

Contact Type  
M:Male  
F:Female

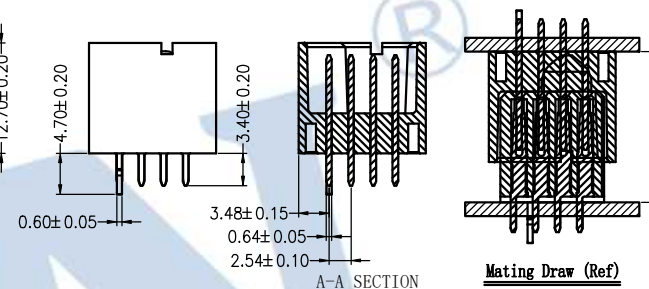
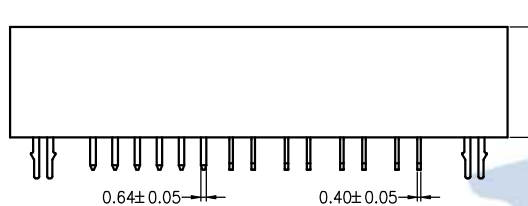
Contact Plating  
S1:3u" Gold/Tin  
S2:5u" Gold/Tin

Insulator Material Option  
C=BK-PA6T

Packing  
A:Tray  
T:Tube

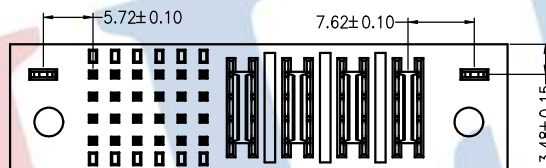


Mating Draw (Ref)

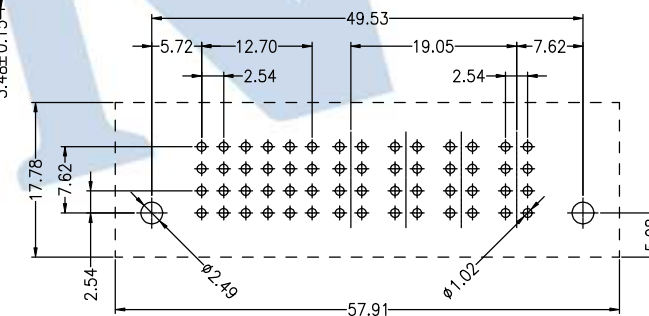


A-A SECTION

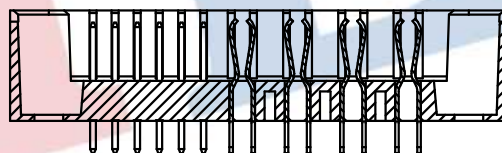
Mating Draw (Ref)



B-B SECTION



P.C.B Layout



				OPERATION		DRAW	zhouqiyong	2022.06.29	SCALE	FIT	<b>JILN</b> ® 深圳市锦凌电子有限公司 SHENZHEN JINLING ELECTRONICS CO.,LTD Tel: 86-755-27483253 Fax: 86-755-2997-5588	
				X.X	±0.30				UNIT	mm		
				X.XX	±0.20	CHECK		SIZE	A4	PART NO. 4500-28MXXCSX0X		
				X.XXX	±0.10		SHEET	1/1				
A0	2022.06.29	NEW DRAWING		Angle	±3°	APPROVE		PROJ.	◆ □	TITLE:	HCP 24S+4P 电源座 直公	
REV	DATE	MODIFICATION DESCRIPTION		DIM	TOL							